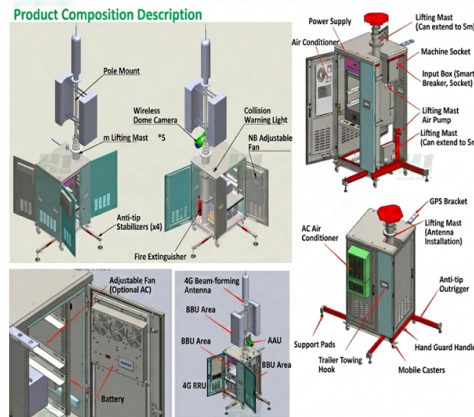


# What is the busbar of a fire protection distribution cabinet



## Overview

A busbar is essentially a strip or bar of conductive metal, usually copper or aluminum. It efficiently distributes electrical current from a single input source to multiple output circuits within switchgear, panelboards, or busway systems, providing a central connection point. Unlike traditional wiring methods, busbars are designed to handle high current loads. Electrical busbar systems (sometimes simply referred to as busbar systems) are a modular approach to electrical wiring, where instead of a standard cable wiring to every single electrical device, the electrical devices are mounted onto an adapter which is directly fitted to a current carrying. The power busbar system provides energy transmission and distribution at current levels of 40A-63A. Manufactured to supply power to lighting and wall socket circuits, as well as small electrical machines and devices, requiring three phase and/or single phase energy. As the main electrical conduction and power distribution part, the busbar ensures smooth, safe and efficient operation of. Power distribution cabinets are essential components in low-voltage electrical distribution systems.

## Article Content

How to choose the right screw for the job

Bunnings Team Member Jul 5, 2024 Hi @dannell, Thank you for your question about decking screws and welcome to the Bunnings Workshop community, it is fantastic to have you with ...

Electrical busbar system

Electrical busbar systems (sometimes simply referred to as busbar systems) are a modular approach to electrical wiring, where instead of a standard cable wiring to every single electrical device, the ...

Construction Concerns: Electrical Busways

How to use and install busways are discussed in detail in National Fire Protection Association (NFPA) 70, National Electrical Code ®, 2008 edition, Chapter 3, Article 368.

Whole of House

So a quick trip to Bunnings and some thinner pieces of felt have absolutely done the trick. Step 4 - Enjoy all the water in your car!After a quick and simple bit of D.I.Y. I've now got my trusty 1L Frank Green ...

Busbar Power Distribution Explained: Benefits, Types, and Use Cases

In this guide, we'll explain what a busbar is, the different types, and the many benefits it offers—from saving space and improving safety to cutting energy losses and making systems easier ...

What is a Busbar, and Why Does it Matter in Your Electrical System?

A busbar is essentially a strip or bar of conductive metal, usually copper or aluminum. It efficiently distributes electrical current from a single input source to multiple output circuits within switchgear, ...

Does Bunnings cut wood to size?

Many Bunnings stores offer a timber cutting service to help you get your wood home and get started on your project. Here are some frequently asked questions about our timber cutting ...

What is a Busbar, and Why Does it Matter in Your ...

A busbar is essentially a strip or bar of conductive metal, usually copper or aluminum. It efficiently distributes electrical current from a single input source to ...

About Workshop

Bunnings Workshop is a friendly online community for asking home improvement and gardening questions and sharing your projects. Whether you are a D.I.Y. beginner looking for a helping hand or ...

Custom Copper Busbar Cabinets & Control Boxes: ...

Copper busbar cabinets function as high-current carriers for stable electrical transmission, while control boxes—equipped with distribution control ...

How to tighten new but loose mixer tap

Welcome to the Bunnings Workshop community @siany. It's wonderful to have you join us, and many thanks for jumping into the discussion. If you've installed the tap correctly and ...

Custom Copper Busbar Cabinets & Control Boxes: Integrated Power ...

Copper busbar cabinets function as high-current carriers for stable electrical transmission, while control boxes—equipped with distribution control panels —serve as intelligent ...

How to Improve Safety in Power Distribution Cabinets | Complete ...

Learn how to improve safety in power distribution cabinets through proper fuse protection, busbar system design, isolation devices, thermal management, and preventive maintenance in low ...

Electrical cabinet busbar

Electrical cabinet busbar is composed of the following main parts: Conductive core: Is the most important part, usually made from a good conductive material such as copper or aluminum. The ...

How to set a Click 24/7 Digital Timer?

I am experiencing difficulty setting a "Click 24/7 Digital Timer". I want it to start 5:00 pm each day and off at 5:03 pm. It will turn on a pump attached to a water tank and deliver water right ...

Busbar Trunking | EAE Elektrik | Power Distribution

The Busbar Trunking System was first introduced in America during the 1930s to meet the requirements of the construction industry, with the advent of skyscrapers and the development of production ...

Understanding Electrical Busbars and the Role of Busbar Covers in ...

Modern busbar covers are made from high-grade insulating materials such as polycarbonate, PVC, or silicone. These materials are flame-retardant, UV-resistant, and capable of ...

How to fix a leaking toilet

Welcome to the Bunnings Workshop community @diy-chris. It's terrific to have you join us, and many thanks for your question about replacing a toilet seal. I believe the cream-coloured collar pictured ...

### XU1 battery compatibility

I have a XU1 whipper snipper purchased from Bunnings but out of Warranty model XGT/018 The battery is not holding much charge and I would like to purchase a replacement. However it seems that the ...

### CATALOG Pmax low-voltage compact bus duct system

The bus bar is not bent at the plug adapter, maintaining the compactness of the system. Low impedance provides the Pmax bus duct system with lower voltage drop and line loss. With rapid heat ...

## Contact Us

For more information, pricing, or custom solutions, please contact us:

Website: <https://budowasilesia.pl>

Email: [contact@budowasilesia.pl](mailto:contact@budowasilesia.pl)

Phone: +48 537 192 846

Address: ul. Chorzowska 45, 40-001 Katowice, Silesian Voivodeship, Poland

This document is for informational purposes only. Specifications subject to change without notice.

