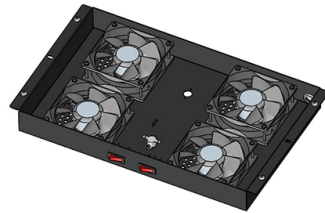


Using optical module lc to sc conversion



Overview

This discussion is aimed at comprehensively introducing the LC to SC adapter, its technical features, working principles, and scope of use in reality. From an understanding of what core structural elements are required for smooth conversion to the type of situations that warrant its application. Most SFP fiber optic modules use LC connectors, while SC connectors are mainly found in legacy networks and MPO/MTP connectors are used for high-density cabling rather than directly on standard SFP modules. This connector landscape reflects how modern SFP deployments prioritize port density and. If you are upgrading a network switch or deploying fiber to the home (FTTH), you will inevitably face the connector choice: LC vs SC. While both are proven fiber connectors, they are not interchangeable on SFP modules. We supply various kinds of hybrid adapters, including the FC, ST, SC. The QuickTreX ® LC Female to SC Male Multimode Fiber Optic Conversion Adapter is engineered to seamlessly connect LC and SC fiber optic connectors in high-performance multimode networks. Compatible with OM3 and OM4 50/125 fiber, this simplex adapter ensures reliable, low-loss connections for data.



Article Content

SC SFP vs LC SFP Module: Which one should you choose?

Although most SFP modules have an LC connector by default, very few SFPs provide an SC connector. This post will focus on LC SFP vs SC SFP and hopes to provide comprehensive ...

LC vs SC Fiber Connectors: Key Differences & Applications

Learn about the differences between LC and SC fiber connectors. Explore their performance, applications, and selection tips for high-speed networks and data centers.

Understanding the LC to SC Fiber Optic Adapter: A Complete Guide

Discover the LC to SC fiber optic adapter: a versatile solution for multimode and simplex applications. Explore connectors, shipping options, and hybrid designs.

Understanding SC and LC Adapter/Coupler for ...

Discover the differences between SC and LC adapter/coupler for singlemode and multimode fiber optic connections.

LC to SC Single Mode Duplex Hybrid Fiber Adapter

The LC Female to SC Male Single Mode Duplex Hybrid Fiber Adapter provides a reliable and cost-effective solution for connecting LC and SC connectors within single mode optical networks.

MTP LC SC connector transceiver choices: wiring reality

This article helps network engineers and fiber installers choose the right MTP LC SC connector transceiver setup by mapping connector types to real deployment constraints, including ...

LC to SC UPC Conversion Adapter | MM OM3/4 | Simplex

The QuickTreX ® LC Female to SC Male Multimode Fiber Optic Conversion Adapter is engineered to seamlessly connect LC and SC fiber optic connectors in high-performance multimode networks.

SFP Fiber Optic Connector Types: LC, SC, MPO Explained

When existing fiber infrastructure terminates with SC connectors, adapters or hybrid patch cables are required to interface with LC-based SFP modules. This approach preserves existing cabling while ...

LC vs SC SFP Module: Key Differences & 2025 Buying Guide

Confused about the LC vs SC SFP module choice? We explain the physical differences, density benefits, and why Wolontek recommends LC for data centers and SC for FTTH.

Contact Us

For more information, pricing, or custom solutions, please contact us:

Website: <https://budowasilesia.pl>

Email: contact@budowasilesia.pl

Phone: +48 537 192 846

Address: ul. Chorzowska 45, 40-001 Katowice, Silesian Voivodeship, Poland

This document is for informational purposes only. Specifications subject to change without notice.

