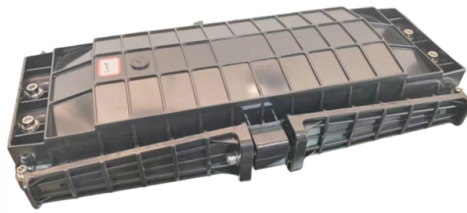


Terminal Box Wiring Process Requirements



Overview

Requires frequent testing, labeled circuits, and organized wiring. High vibration environment; needs secure lugs/blocks. Needs moisture protection and easy sensor replacement. To ensure the safe and reliable use of terminal boxes in SIS systems, compliance with the following standards and guidelines is essential: IEC 61511 is the primary standard governing safety instrumented systems in the process industry. Key wiring requirements include: Redundancy Design: SIS systems. These certifications mean your electrical circuit and terminal box wiring will meet the highest safety and quality requirements. A few extra seconds can prevent big problems later. They provide a safe and secure way to connect and protect electrical wires, ensuring that the flow of electricity is properly distributed. Here we will discuss some of these procedures and outline a few of the advantages and disadvantages of each.

Article Content

Terminal Box vs. Junction Box: The Complete ...

Confused by Terminal Box vs. Junction Box? Discover key technical differences, NEC code requirements, and ROI analysis to select the right ...

Feasibility and Standard Requirements for Using Terminal Boxes in ...

In the wiring process of Safety Instrumented Systems (SIS), terminal boxes are commonly used for connection and signal distribution. They play a crucial role in simplifying wiring structures and ...

25-Point Instrumentation Junction Box (JB) Wiring and ...

Ensure safe and compliant instrumentation JB wiring in process plants. Use this detailed 25-point checklist for inspection, termination, and QA verification.

The Ultimate Guide to Terminal Junction Box Wiring: ...

In this step-by-step guide, we will walk you through the process of wiring a terminal junction box to ensure a successful and efficient electrical installation.

Motor terminal box connection methods, procedures

The bolt and wire materials should be the same metallurgical family (such as copper or aluminum and their alloys) so that expansion does not result in wire damage or loosening of the connection.

Terminal junction box wiring steps

The safest and most efficient way to wire a terminal junction box: a professional step-by-step guide.

Construction and working principle of terminal box

In summary, the design and selection of terminal boxes depend on specific application requirements, including the required current capacity, environmental conditions, installation space, and ...

Feasibility and Standard Requirements for Using ...

In the wiring process of Safety Instrumented Systems (SIS), terminal boxes are commonly used for connection and signal distribution. They play a crucial role in ...

Terminal Box Installation: A Detailed Guide

The proper installation of a terminal box is a critical skill for any electrician or electrical technician. By following the guidelines outlined in this guide, you can ensure that your installations are safe, reliable, ...

Terminal Boxes | Midwest Electric Products

Terminal Boxes are for use in converting from overhead to under-ground services and for multi-circuit wiring. The NEMA 3R enclosure provides protection for all terminations inside and provides a ...

Methods of Selecting, Sizing, Installing, and Supporting Terminal Boxes

PURPOSE 1.1 This engineering standard defines the methods of selecting, sizing, installing, and supporting terminal boxes. SCOPE 2.1 This standard applies to all terminal box installations.

Terminal Box vs. Junction Box: The Complete Engineering Guide (2026)

Confused by Terminal Box vs. Junction Box? Discover key technical differences, NEC code requirements, and ROI analysis to select the right enclosure for industrial automation.

Contact Us

For more information, pricing, or custom solutions, please contact us:

Website: <https://budowasilesia.pl>

Email: contact@budowasilesia.pl

Phone: +48 537 192 846

Address: ul. Chorzowska 45, 40-001 Katowice, Silesian Voivodeship, Poland

This document is for informational purposes only. Specifications subject to change without notice.

