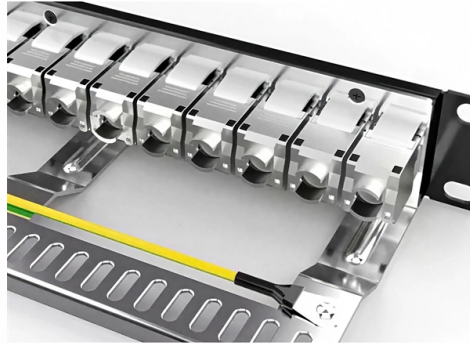


Principles of Embedded Optical Modules



Overview

This comprehensive guide breaks down the internal structure, core components (TOSA, ROSA, lasers), and operational mechanisms of SFP optical modules, enriched with technical insights and real-world applications. Operating at the physical layer of the OSI model, optical modules are core devices in optical. The Printed Circuit Board (PCB) at the heart of these modules is no longer a simple substrate but a highly engineered system. Designing and producing these complex PCBs presents formidable challenges, requiring a convergence of disciplines—from high-frequency signal integrity and advanced thermal. This document focuses on projection optical modules that incorporate Texas Instruments' DLP Display chips and are designed to project an image onto a surface for a variety of applications, including smartphones, tablets, display projectors, smart home displays, digital signage, AR glasses, and. At present many of the optical and digital devices may be mounted on opposite sides of the PCB and all connections are on the surface of the PCB. (Figure 1) The limitations for this technology for on board transmission of signals are size, surface space requirements, and limited channels available. At present, the world's AI large-scale models have been released one after another and combined with industry applications to promote the smart upgrade of thousands of industries, and continue to drive the demand for optical chips, optical devices, and optical module in the upstream of the data. Embedded optical modules are about to shake up the future of computing.

Article Content

Introduction to the knowledge and principle of optical modules

Any optical module has two functions of sending and receiving, performing photoelectric conversion and electro-optical conversion, so that the optical modules are inseparable from the ...

Optical Module Working Principle | SFP Transceiver Technical Guide ...

Learn the complete working principle of optical modules (SFP transceivers), including TOSA/ROSA components, laser types, temperature compensation, and more. Weunion's high-performance SFP ...

Printed Circuit Board Architecture for the Use of Optical ...

An optical printed circuit board with electrical connections in the Z axis and optical connections in the X and Y axis according to the present concept is described in greater detail below.

Optical module - A comprehensive exploration

This article will explore optical modules comprehensively, including optical modules definition, packaging and optical modules PCB and how to choose optical modules?

Everything You Need to Know About Optical Modules

Factors to consider when choosing optical modules include optical wavelengths, single-mode or multimode modules, data transmission rates, specialized modules, and compatibility with ...

Understanding Optical Modules: Working Principles, Structures, and ...

Explore the working principles, structures, and performance metrics of optical modules, essential components of optical fiber communication systems. Learn about key indicators such as average ...

Optical Module PCB: The Ultimate Guide to Design, Fabrication, and ...

Designing and producing these complex PCBs presents formidable challenges, requiring a convergence of disciplines—from high-frequency signal integrity and advanced thermal management to micron ...

Understanding Optical Modules: Working Principles, ...

Explore the working principles, structures, and performance metrics of optical modules, essential components of optical fiber communication systems. Learn ...

Embedded Optical Modules Expected to Grow 50% CAGR by 2033

What Are Embedded Optical Modules and Why Do They Matter? Embedded optical modules don't just replace traditional pluggable optical transceivers—they blow them out of the water ...

Optical Assembly

Such devices are known as embedded optical modules. More details about pluggable transceivers and embedded optical modules are described in the next section. Standards and specifications are ...

TI DLP® System Design: Optical Module Specifications

This document focuses on projection optical modules that incorporate Texas Instruments' DLP Display chips and are designed to project an image onto a surface for a variety of applications, including ...

Contact Us

For more information, pricing, or custom solutions, please contact us:

Website: <https://budowasilesia.pl>

Email: contact@budowasilesia.pl

Phone: +48 537 192 846

Address: ul. Chorzowska 45, 40-001 Katowice, Silesian Voivodeship, Poland

This document is for informational purposes only. Specifications subject to change without notice.

