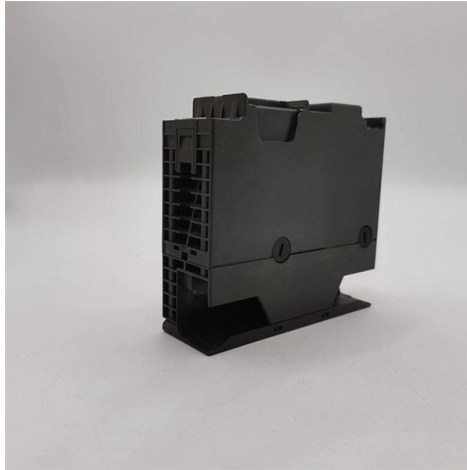


Locate the optical distribution box via the fiber distribution box



Overview

Here's a step-by-step guide to help you set up your fiber distribution box seamlessly: Before installing the fiber distribution box, ensure that your optical cables are properly prepared for connection. A Fiber Optic Termination Box is a small enclosure located at the terminal end of the fiber where it enters your customer premises. When selecting a fiber distribution box, several considerations come into play. As networks expand and more homes and businesses require high-speed connectivity, skillfully installing and managing an FDB becomes essential knowledge for any. The optical fiber distribution box allows people to easily access the optical fibers in the box, and can well protect the optical fibers. In addition, the drawer structure also facilitates high-density wiring and good cable management. SIGN UP TODAY to learn the proper installation technique e splitter to the distribution network. Read and understand this procedure (as well as.



Article Content

FieldSmart Fiber Distribution Hub (FDH)

Level cabinet and drill 5/8" hole through lower bracket and pole, and install 5/8" rod, washers and nuts. Note: Care should be taken to avoid over-tightening and deforming the hoist plate.

Ultimate Guide to Fiber Optic Distribution Box: Types ...

One essential component of a fiber optic network is the fiber optic distribution box. In this article, we will delve into the world of fiber optic distribution boxes - what they are, their importance, ...

FDF Installation Guide

Determine the location on the frame where the ground wire (purchased separately) will be attached. Scrape of paint from this location of the frame to ensure metal-to-metal contact.

What's Inside a Fiber Distribution Box? Let's Break It Down!

FDBs play a pivotal role in maintaining signal integrity over long distances, offering a centralized location for splicing, connecting, and branching fiber optic links. Their presence simplifies network ...

How to Use Fiber Distribution Box: A Comprehensive Guide

A fiber distribution box (FDB) functions as a central hub in fiber optic networks where the main cable is split into multiple individual fibers for distribution to end users.

How To Use Fiber Distribution Box?

A fiber distribution box, also called a fiber termination box, is a protective enclosure that connects fiber optic cables from the service provider to individual subscriber lines.

Optical Cable Distribution: Efficient How-To Guide

Learn how to efficiently manage and distribute optical cables using a fiber distribution box. Explore protective sheath and organized distribution.

Integrated wiring fiber optic distribution box installation tutorial

In general, installing the optical fiber distribution box can be divided into three steps: installing the optical fiber distribution box on the rack, introducing the optical cable into the optical ...

Fiber Optic "Big Three": Termination Box, Distribution Box & ODF

From a planning and design perspective, this article will give you an organized understanding of the meaning, function, and differences between the three most frequently used fiber ...

Installation of FTTH Fiber Optic Distribution Box-BLOG-Grandway

FTTH fiber optic distribution box is suitable for the wiring connection of optical cable and optical communication equipment. Through the adapter in the distribution box, the optical signal is led out by ...

Contact Us

For more information, pricing, or custom solutions, please contact us:

Website: <https://budowasilesia.pl>

Email: contact@budowasilesia.pl

Phone: +48 537 192 846

Address: ul. Chorzowska 45, 40-001 Katowice, Silesian Voivodeship, Poland

This document is for informational purposes only. Specifications subject to change without notice.

