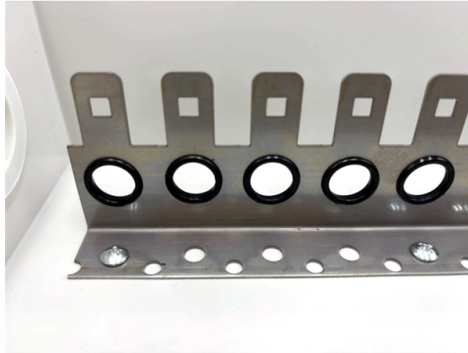


# Improper wiring in household electrical distribution boxes



## Overview

Practice good wiring: secure grounding, neat cable management, proper insulation, and correct wire gauge and breaker size. Include protection devices like breakers, fuses, and surge protectors—each circuit should have its own protection. Whether in a home or an industrial facility, this box keeps your electrical setup organized, functional, and efficient. However, the key to. In modern electrical systems, cable distribution boxes (also known as electrical distribution boxes or distribution boxes) play a crucial role as the key hub for managing, distributing, and protecting circuits. The good news is that most issues are easy to troubleshoot, especially if you follow the steps below. You. An electrical panel box, also known as a breaker box or a distribution board, is a crucial component of any electrical system. In order to understand the importance of this wiring.

## Article Content

### A Step-by-Step Guide to Wiring an Electrical Panel Box

Find out how to properly wire an electrical panel box with a comprehensive diagram and step-by-step instructions.

### How to Troubleshoot a Newly Installed Electrical Box

If you just installed your own new electrical box, and things aren't working properly, it's not fun. The good news is that most issues are easy to troubleshoot, especially if you follow the steps ...

### The installation requirements for the distribution box

Learn how to install a distribution box safely and correctly. Covers wiring, placement, standards, and expert tips for a compliant setup.

### Common Electrical Code Violations | PDF | Electrical ...

The document summarizes common electrical installation errors uncovered at a building and provides recommendations to address code violations. Key issues ...

### 9 Common Wiring Mistakes and Code Violations

You can't run communication wires (phone, cable, or other low-voltage wires) into a box occupied by 120v or higher unless the communication wire or the box is rated for that use.

### Common Electrical Code Violations | PDF | Electrical Wiring | Insulator ...

The document summarizes common electrical installation errors uncovered at a building and provides recommendations to address code violations. Key issues include exposed wires, lack of warning ...

### 10 Electrical Wiring Problems Solved

In this guide, we'll give you tips for dealing with the most common problems caused by older, outdated wiring. Some wiring problems are just inconveniences. But others can pose serious ...

### The Complete Guide to Wiring Diagrams: From Meter to Breaker Box ...

Learn how to read and understand a wiring diagram from the electric meter to the breaker box in order to troubleshoot and fix electrical problems in your home. Get step-by-step instructions and diagrams for ...

### Electrical distribution and service panels - common issues

If the circuit breaker allows more current (amps) than the conductor can handle, it can lead to overheating and present a fire hazard. If this condition has been flagged on your inspection report, it ...

## How to Install a Cable Distribution Box Safely and Correctly?

The installation of branch box involves professional electrical knowledge and operating skills, and improper installation may cause electrical accidents such as short circuit, fire and electric ...

What are the common problems of distribution boxes?

However, the internal layout of some distribution boxes is chaotic, and the wires are messy, which not only affects the appearance, but also may cause wiring errors and increase the risk ...

## Contact Us

For more information, pricing, or custom solutions, please contact us:

Website: <https://budowasilesia.pl>

Email: [contact@budowasilesia.pl](mailto:contact@budowasilesia.pl)

Phone: +48 537 192 846

Address: ul. Chorzowska 45, 40-001 Katowice, Silesian Voivodeship, Poland

This document is for informational purposes only. Specifications subject to change without notice.

