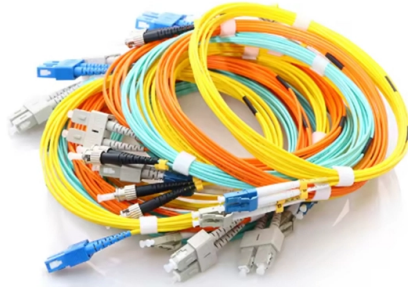


Front of Optical Transmission Box



Overview

An optical Distribution Frame (ODF) or patch panel is the starting point for optical cables, most commonly found in rack cabinets in Head End (HE)/Central Office (CO)/Point of Presence (POP)/Data Centre (DC) or smaller cabinets or enclosures. OTRANS strives to provide you with professional, reliable. gtail, ribbon and bunch cable distribution). An ideal solution for cabling system rts four modules and a variety of adapters. Fiber optic terminal box includes faceplate and drop cable protection box which can be used as a termination point for the feeder cable to connect with drop cable in FTTx communication network system. It is widely deployed in FTTH, FTTB, and other access networks to ensure stable signal transmission from backbone cables to end. The optical fiber terminal box is the terminal joint of an optical cable, one end of which is an optical cable, and the other end is a pigtail, which is equivalent to a device that splits an optical cable into a single optical fiber.



Article Content

Optical Distribution Frames/Patch Panel

They consist of a housing where modules with a capacity of 12 or 24 fibers are inserted from the front. The possibility of adding new cables and accessing all elements is very simple, fast, and safe.

Fiber Optic Terminal Box

Why Choose Tuolima Fiber Optic Terminal Box?Types of Fiber Optic Terminal BoxesApplication of Ofc Termination BoxFunction of Fiber Optic Terminal BoxFeatures of Fiber Termination BoxAs a professional optical terminal box manufacturer, TUOLIMA has different types of OFC termination box for sale. Different optical terminal boxes are used in different situations. But the true usage of OFC termination box is for cable management. The optical terminal box is used to terminate the fiber optic cables and connect the core of the cable...See more on cntuolima The Fiber Optic Association

Optical Distribution Frames/Patch Panel - thefoa

They consist of a housing where modules with a capacity of 12 or 24 fibers are inserted from the front. The possibility of adding new cables and accessing all elements is very simple, fast, and safe.

Fiber Optic Termination Box: The Complete Guide

This guide explains what a fiber optic termination box is, how it works in practice, where it is typically installed, and how to choose the right model for different network environments.

Fiber Optic Terminal Box

The optical terminal box is also called fiber termination box, and many engineering companies also call it fiber access terminal box or OFC termination box. It is a box for protecting the optical cable and ...

Fiber Optical Distribution Box

It provides a secure point for splicing, branching, distributing, straight-through, or fiber optic termination, preventing environmental hazards such as dust, moisture, water, or UV rays when used outdoors.

T Series Optical Distribution Cabinet/Frame-Metal Fiber Distribution ...

The T series optical distribution cabinet (ODC) is a traditional type ODC. It combines the functions of splicing, distribution, storage, environment-proof and management of optical cables. Both high quality ...

Odf fiber terminal box ODF

ODF unit box is a product designed with high density and large capacity. It has the characteristics of beautiful appearance, reasonable distribution, easy search, easy management, ...

Internal structure of optical fiber electrical box

The internal structure of a fiber optic electrical box (commonly referred to as a fiber distribution box or ODF box) is usually designed to be both compact and efficient for the management and maintenance ...

Optical distribution frames and patch panels

Made from high-quality steel and electrostatic spray finished, this patch panel is ideal for optical telecommunication systems, FTTH, WAN, TV networks and cable terminal branch connections.

Fiber-Optic Devices TOSLINK

There are two package types available for TOSLINK optical modules. One is a molded resin package for ordinary applications. The other is ceramic, used for applications requiring exceptionally high ...

Fiber Optic Distribution Boxes (FDB) & ODF Supplier

We offer a wide range of 1-24 core FDB boxes and ODF cabinets for indoor/outdoor FTTH deployment. Durable, IP65 rated, and easy to install. Browse our models and get a wholesale quote.

Contact Us

For more information, pricing, or custom solutions, please contact us:

Website: <https://budowasilesia.pl>

Email: contact@budowasilesia.pl

Phone: +48 537 192 846

Address: ul. Chorzowska 45, 40-001 Katowice, Silesian Voivodeship, Poland

This document is for informational purposes only. Specifications subject to change without notice.

