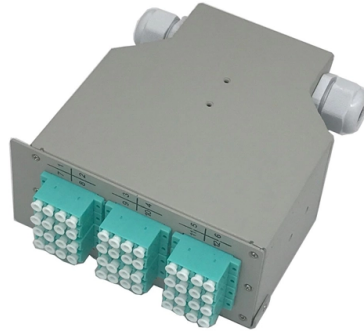


# Cable Tray Removal Plan in Advance



## Overview

Before beginning the cable removal process, thorough planning is crucial. Identify active and inactive cables. It involves several important steps. Confirm the Area and Scope First, you must look at the project drawings and check them against the actual site. You need to mark the exact. The 2005 edition of NEC is listed as a reference in Appendix A - "Reference Documents" of OSHA Subpart S, Electrical (1910). While these references provide nonmandatory information that can be helpful in understanding and complying with Subpart S, compliance with the referenced. Cable removal is an essential aspect of infrastructure management. Over time, obsolete cables can accumulate, leading to a cluttered and potentially hazardous work. This Method Statement covers the installation of Cable Trays. Section 1105/SP/E-16112 Shop drawings ref no: 1505/A&P/SD/AN Work will be carried out only when all associated. Busway Installation is the process of hanging and connecting busway throughout a commercial or industrial facility. Busway (also known as bus duct) is a raceway consisting of metal enclosures containing factory mounted, bare, or insulated conductors. en POVER TRAYS TO BE LADDER 3 USAgLC (INSIDE AND INCH FITTINGS, UNLESS NOTEW. RUNG LAVER TO 3 INCH USA2LE otprN OiäENS'ON), ug as INCH RADII Ftr11NSS.

## Article Content

### Best Practice Guide to Cable Ladder and Cable Tray Systems

These guidelines will be particularly useful for the design, specification, procurement, installation and maintenance of these systems. Cable ladder systems and cable tray systems are designed for use ...

### METHOD STATEMENT FOR CABLE TRAY AND TRUNKING ...

This procedure to clear the method of the supply, installations Cable Tray and Trunking System for the project.

### Quality Guidelines for Cable Tray Works | PDF

Quality Guidelines for Cable Tray Works This document outlines the quality guidelines and methodology for dismantling and re-installation of cable trunk covers in civil and electrical works.

### Cable Removal: Best Practices

Cable removal is a critical task that requires meticulous planning, proper tools, and adherence to best practices. By following the steps outlined in this guide, organizations can ensure a safe, efficient, and ...

### CABLE TRAY INSTITUTE

The Cable Tray Institute (CTI) was founded in 1991 to support the cable tray industry by engaging in research, development, education, and the dissemination of information designed to promote, ...

### Method Statement For Cable Pulling and Final Electrical Connections ...

This procedure covers the method for all the cable pulling, electrical connections and terminations for cables running on cable ladders and cable trays. Electrical method also covers all associated cables ...

### Busway and Cable Tray Installation

It involves calculating angles and bends as well as measuring and cutting cable trays prior to overhead installation. Because this task requires work at elevation, ladders or other types of lift equipment are ...

### METHOD STATEMENT CABLE TRAYS

This Method Statement covers the installation of Cable Trays. This procedure is to define the method used to ensure that Cable Trays have been installed as per the ...

### Electrical Task Analysis Document: Electrical Demolition

It involves tracing, placing electrical circuits in an electrically safe working condition, and reinstalling circuits prior to other subcontractors performing traditional demolition.

"Electrical Cable Tray Layout Legend,Notes,References and ...

A BASKET "EAVE CABLE rut SHALL BE INSTALLED ON CABLES IN RUNS (IF GREATER THAN 20 TO SUPPORT THE CABLE. ONE CABLE SUPPORT BE PROVIOEO THE TOP OF THE VERTICAL ...

Cable Tray SHIB NAL

Cables in trays can be easy to mark, find, and remove. Their flexibility makes cable trays a good choice for installation situations that require upgrading, reconfiguring, or relocation.

How to Demolish Cable Trays: A Complete Guide

Learn how to safely and effectively demolish cable trays. Our guide covers preparation, the demolition process, and post-demolition steps.

Cable Tray Fill Calculator

Plan cable trays confidently with precise area math and presets for compliance. Set target fill, safety margin, and packing assumptions for projects across disciplines.

## Contact Us

For more information, pricing, or custom solutions, please contact us:

Website: <https://budowasilesia.pl>

Email: [contact@budowasilesia.pl](mailto:contact@budowasilesia.pl)

Phone: +48 537 192 846

Address: ul. Chorzowska 45, 40-001 Katowice, Silesian Voivodeship, Poland

This document is for informational purposes only. Specifications subject to change without notice.

